

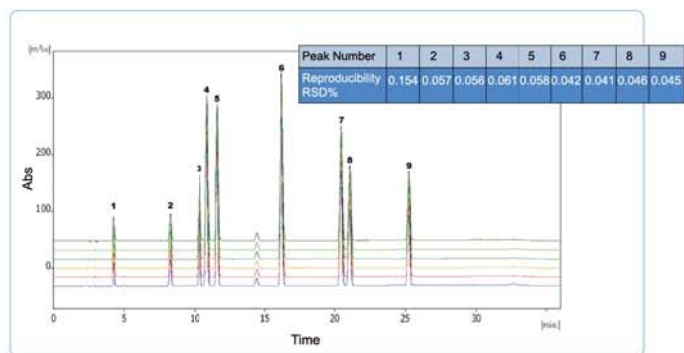
# L-3245 Quaternary Pump

A more integrated structure design: in addition to the standard quaternary pump, there are also integrated solvent bottle reservoir, peristaltic pump and 4-channel degasser.



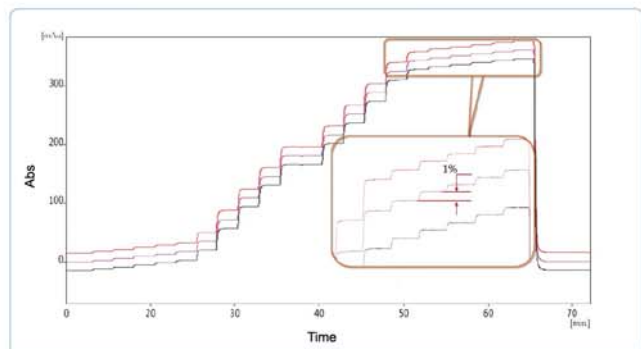
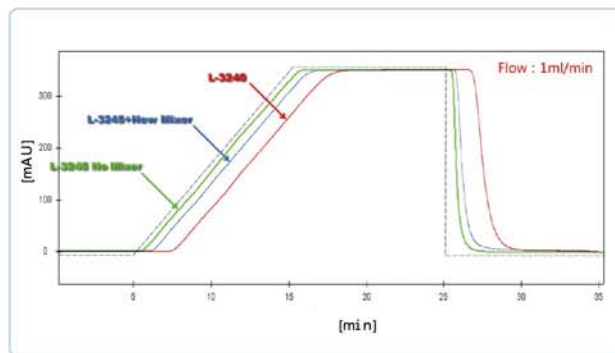
## Better stability and reproducibility

The upgraded automatic solvent-compressibility compensation and gradient-valve fast drive technology allows a precise mobile-phase proportioning under any defined flowrate or pressure, even workable for a proportion small as 1% level.



## Smaller delay volume, better mixing effect

Optimized piston-moving curve and pulsation dampening algorithm: pressure pulsation can be kept below 1% even without a damper, resulting a dramatically reduced delay volume.



# L-3245 Quaternary Pump

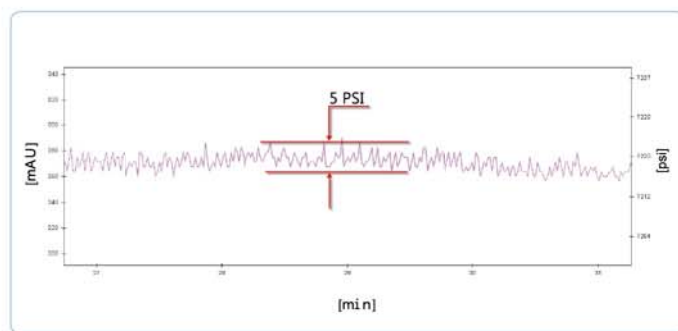
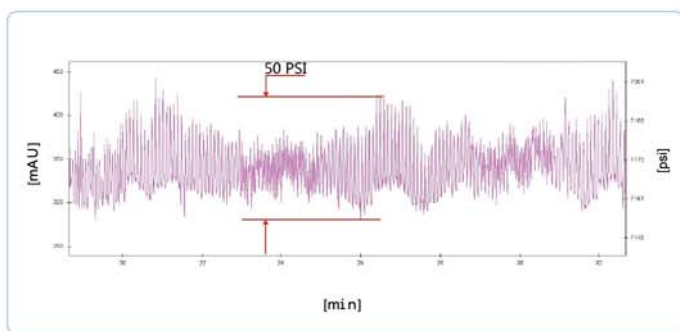
**More than an up-to-9000PSI operating pressure: lower pressure pulsation, more stable flow output**

- New design of piston-moving curve plus optimized pressure pulsation dampening algorithm, allow a pressure pulsation below 10PSI without any dampers.
- Special optimization against liquid's solvent-compressibility under high pressure, ensures a stable liquid output under 9000PSI.
- Provide a reliable & fast solution for your high-pressure LC system.

## Comparison:

When delivering mobile phases with high compressibility (such as methanol), a large fluctuation would be inevitable under a pressure over 4000PSI. (Figure left)

L-3245 is able to stably deliver mobile phase even under 7000PSI. (Figure right)



## Specification

Flowrate Precision	≤0.07% RSD (@1mL/min, Water) (ASTM)
Pressure Limit	9,000 PSI (@0-2mL/min)
	6,000 PSI (@2-5mL/min)
	3,000 PSI (@5-10mL/min)
Pressure Pulsation	≤1% (@1mL/min, Water, Back Pressure > 10Mpa)
Gradient Accuracy	±0.5%
Gradient Reproducibility	≤0.2% SD
Weight	20Kg
Size	453 mm(D)×359 mm(W)× 244(H)mm
Power supply	100 VAC - 240 VAC, 50/60 Hz, 150W max

**\* There are many improvements in L-3245. Want to know more about it? Please contact with RIGOL.**

The contents of this publication are provided to you "as is" without warranty of any kind, and are subject to change without notice. RIGOL does not assume any responsibility or liability for any damage, whether direct or indirect, relating to the use of this publication.